

FOR SALE

#122-8188 Manitoba Street, Vancouver, BC

BRAND-NEW GROUND FLOOR INDUSTRIAL /
RETAIL SPACE IN SOUTH VANCOUVER



Kelvin Luk*
Principal
6604.808.8192
kelvin@lukrealestategroup.com

William Maunsell*
Associate Vice President
604.970.9738
william@lukrealestategroup.com

Stephen Tran
Commercial Broker
604.377.3337
stephen@lukrealestategroup.com



REAL ESTATE GROUP

*Personal Real Estate Corporation

Macdonald
COMMERCIAL

OPPORTUNITY

Situated in the heart of South Vancouver, this shell-conditioned 3,284 SF ground-level unit (2,469 SF Ground Floor + 815 SF Mezzanine) at Marine Landing offers a versatile and modern workspace. Designed to accommodate a range of industries, it is ideal for light manufacturing, production studios, warehousing, medical laboratories, and artist studios. With state-of-the-art amenities and advanced business features, Marine Landing fosters growth, innovation, and efficiency, making it an excellent choice for entrepreneurs and industry leaders looking to expand. Seize this opportunity to position your business in one of Vancouver's most dynamic commercial hubs.

SALIENT FACTS

Civic Address:	#122-8188 Manitoba St, Vancouver, BC, V5X 4L8
	PID: 032-383-789
Legal Description:	Strata Lot 8 District Lot 322 Group 1 New Westminster District Strata Plan EPS11021 Together with an interest in the Common Property in proportion to the unit entitlement of the strata lot shown on Form V
Current Zoning:	I-2 Industrial District
Year Built:	2025
Unit Area (Approx. SF):	2,469 SF Ground Floor + 815 SF Mezzanine : Total 3,284 SF
Parking:	3 Stalls
Loading:	Large Rolling Grade Door
Monthly Strata Fees (2026):	\$969.09
2026 Property Taxes:	\$21,199.60
Asking Price:	\$2,487,500 (\$757 per SF)





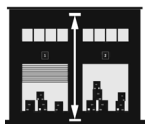
LOCATION

Marine Landing is strategically located off Marine Drive, offering seamless access to major routes like the Oak Street and Knight Street Bridges. This prime location provides effortless travel to Richmond, YVR Airport, and Downtown Vancouver, making it ideal for businesses that value efficiency and accessibility. With nearby transit lines and the Canada Line SkyTrain, commuting is convenient for employees, clients, and visitors in this thriving commercial hub.

HIGHLIGHTS



A Striking Landmark: As Canada's largest twinned, stacked mixed-use industrial and office complex, Marine Landing is a dynamic hub in the heart of South Vancouver, designed to foster collaboration, innovation, and growth for a diverse business community.



Expansive Ceiling Height: With 21' ceiling height, your business or tenant gains greater storage capacity, improved airflow, and enhanced operational flexibility. This added vertical space supports efficiency, accommodates specialized equipment, and creates a spacious, open environment that fosters productivity.



Convenience at Your Doorstep: Located in a thriving commercial hub, Marine Landing offers exceptional access to key routes, including the Oak Street and Knight Street Bridges, as well as nearby transit lines and the Canada Line SkyTrain, ensuring seamless commuting for employees, clients, and visitors.



Premium Amenities for Work-Life Balance: Designed to energize and inspire, Marine Landing's amenities support both productivity and well-being. Stay active in the fully equipped fitness center, unwind on the rooftop patio with a BBQ area, and refresh in modern change rooms with private showers and custom lockers. A bicycle facility with a wash station and repair workshop makes commuting effortless. Where you work should support how you live.

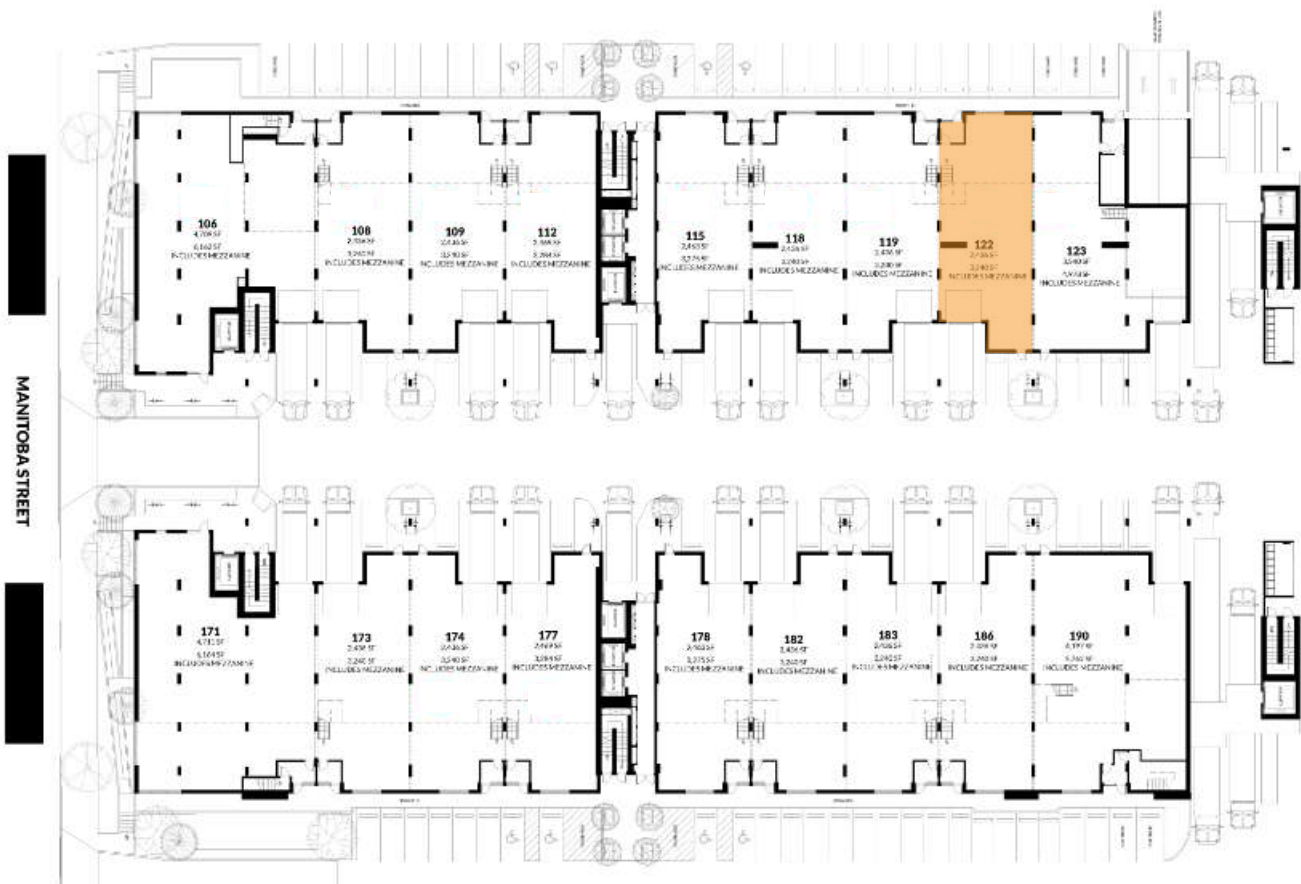


Power/HVAC: The Unit features a 225 AMP service with a 3-phase panel, providing robust electrical capacity to support a wide range of operational needs. The HVAC fan coil heating and cooling system delivers comfort climate control, optimizing productivity year-round.

SURROUNDING TENANTS

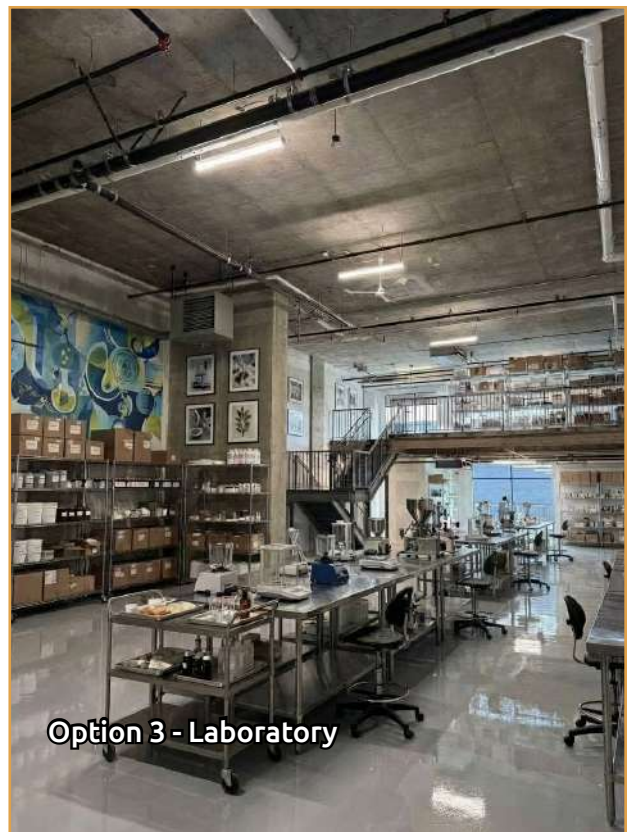


GROUND FLOOR PLAN



POTENTIAL RENDERINGS

**For artistic purposes only*



POTENTIAL RENDERINGS

**For artistic purposes only*



Current



Option 1 - Microbrewery or Craft Beverage Facility



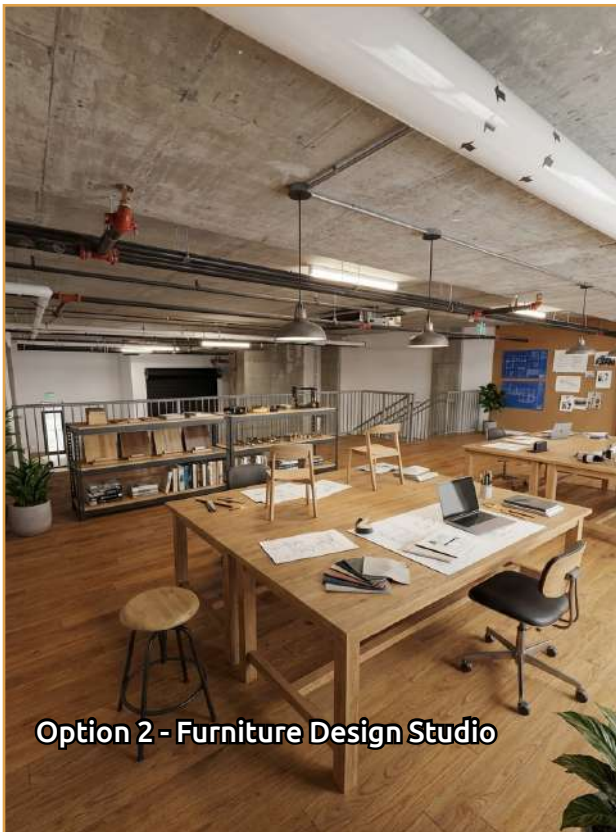
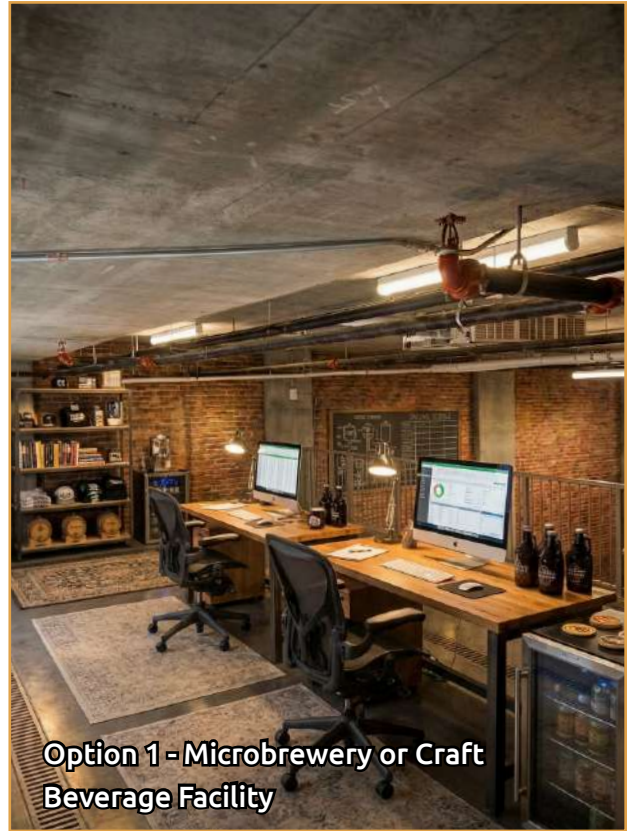
Option 2 - Furniture Design Studio



Option 3 - Laboratory

POTENTIAL RENDERINGS

**For artistic purposes only*



PROPERTY PHOTOS



Rooftop Patio



Gym



Unit Loading



Parking Lot Entry



Mezzanine



Interior Unit

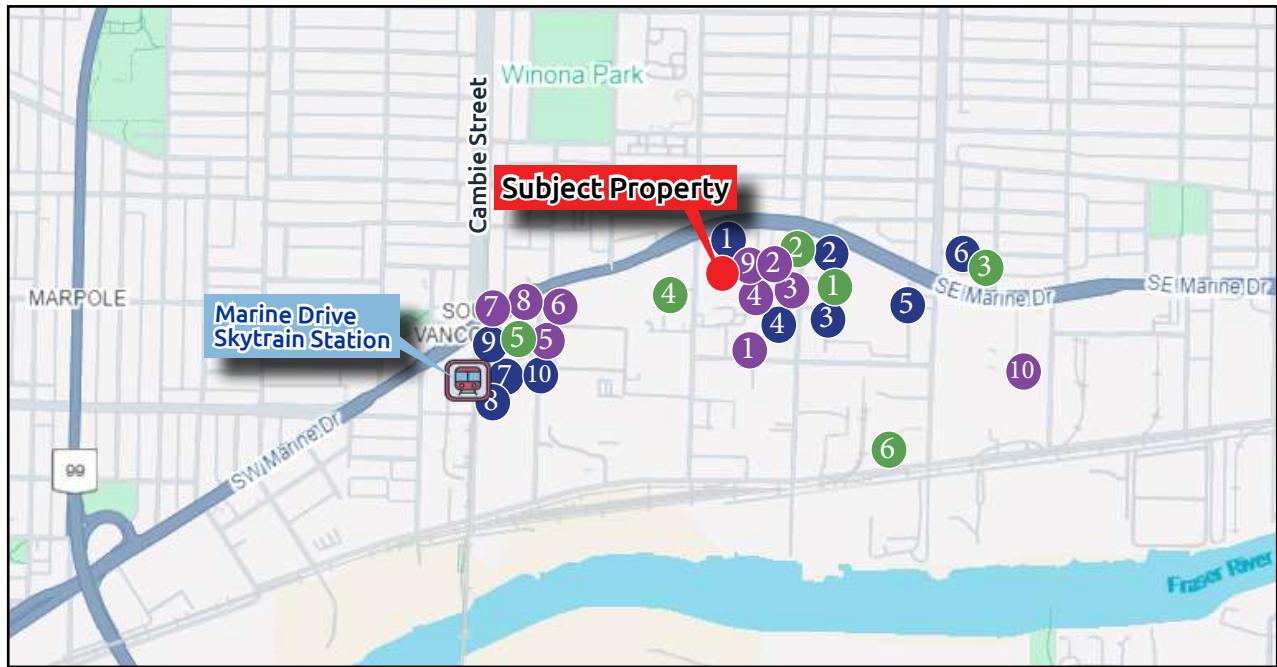


Interior Unit



Interior Unit

NEARBY AMENITIES



● RESTAURANTS

1. McDonald's
2. Wendy's
3. Japadog
4. Starbucks
5. Triple O's
6. Hi Five Chicken
7. A&W
8. Fresh Slice Pizza
9. Kanton Ramen
10. Dublin Crossing

● SHOPPING

1. Canadian Tire
2. Sport Check
3. Mark's
4. Marshalls
5. T&T Supermarket
6. Sleep Country
7. Shoppers Drug Mart
8. Winners
9. Best Buy
10. Superstore

● SERVICES

1. Kal Tire
2. Infinite Tire
3. Marks Marine Pharmacy
4. Lordco Auto Parts
5. Cineplex VIP Cinema
6. Burroughs Printing

● Subject Property

#122-8188 Manitoba Street,
Vancouver, BC

Kelvin Luk*
Principal
6604.808.8192
kelvin@lukrealestategroup.com

William Maunsell*
Associate Vice President
604.970.9738
william@lukrealestategroup.com

Stephen Tran
Commercial Broker
604.377.3337
stephen@lukrealestategroup.com



REAL ESTATE GROUP

*Personal Real Estate Corporation

Luk Real Estate Group ("Luk REG") is a registered team - a part of Macdonald Commercial Real Estate Services Ltd. This document and the information set out herein, including, without limitation, any projections, images, opinions, assumptions and estimates obtained from third parties (the "Information") are for advertising and general information only. Luk REG does not accept or assume any responsibility or liability, direct or consequential, for the Information or the recipient's reliance upon the Information. The recipient of the Information should take such steps as the recipient may deem necessary to verify the Information prior to placing any reliance upon the Information. The Information may change, and any property described in the Information may be withdrawn from the market at any time without notice or obligation to the recipient.

Macdonald
COMMERCIAL